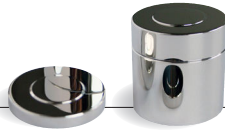







Scheibengewichte

**SPEZIAL-EDELSTAHL HE210**





hochglanzpoliert

EINZELGEWICHTE

Nennwert	Tol.	ohne Etui	 Reinraum Schraubdose	 Reinraum Kunststoff-Etui **	 Holz-Etui Mahagoni	 Reinraum-Etui mit Einsätzen	PTB Kalibrierschein U=1/5 E1 *
+/- mg	Art.-Nr.	Art.-Nr.	Art.-Nr.	Art.-Nr.	Art.-Nr.	Art.-Nr.	10.0000- Art.-Nr.
1 g	0,005	10.SBHO-110	10.SBHD-110	10.SBHP-110	10.SBHM-110		...116
2 g	0,006	10.SBHO-120	10.SBHD-120	10.SBHP-120	10.SBHM-120		...126
5 g	0,008	10.SBHO-130	10.SBHD-130	10.SBHP-130	10.SBHM-130		...136
10 g	0,010	10.SBHO-140	10.SBHD-140	10.SBHP-140	10.SBHM-140		...146
20 g	0,012	10.SBHO-150	10.SBHD-150	10.SBHP-150	10.SBHM-150		...156
50 g	0,015	10.SBHO-160	10.SBHD-160	10.SBHP-160	10.SBHM-160		...166
100 g	0,025	10.SBHO-170	10.SBHD-170	10.SBHP-170	10.SBHM-170	10.SBHR-170	...176
200 g	0,050	10.SBHO-180	10.SBHD-180	10.SBHP-180	10.SBHM-180	10.SBHR-180	...186
500 g	0,125	10.SBHO-190	10.SBHD-190	10.SBHP-190	10.SBHM-190	10.SBHR-190	...196
1 kg	0,25	10.SBHO-210	10.SBHD-210	10.SBHP-210	10.SBHM-210	10.SBHR-210	...216
2 kg	0,5	10.SBHO-220	10.SBHD-220	10.SBHP-220	10.SBHM-220	10.SBHR-220	...226
5 kg	1,2	10.SBHO-230	10.SBHD-230	10.SBHP-230	10.SBHM-230	10.SBHR-230	...236
10 kg	2,5	10.SBHO-240	10.SBHD-240	10.SBHP-240	10.SBHM-240	10.SBHR-240	...246
20 kg	5	10.SBHO-250			10.SBHM-250	10.SBHR-250	...256
50 kg	12	10.SBHO-260			10.SBHM-260	10.SBHR-260	...266

Nennwert	Tol.				 Service Koffer	PTB Kalibrierschein U=1/5 E1 *
+/- mg	Art.-Nr.	Art.-Nr.	Art.-Nr.	Art.-Nr.	Art.-Nr.	10.0000- Art.-Nr.
5 kg	1,2				10.SBHS-230	...236
10 kg	2,5				10.SBHS-240	...246
20 kg	5				10.SBHS-250	...256
50 kg	12				10.SBHS-260	...266

SÄTZE

Nennwert	Anz.	Stückelung	Inhalt	 Reinraum Kunststoff-Koffer	 Holz-Etui Mahagoni	 Service Koffer	 Reinraum-Etui mit Einsätzen	PTB Kalibrierschein U=1/5 E1 *
				Art.-Nr.	Art.-Nr.	Art.-Nr.	Art.-Nr.	10.0000- Art.-Nr.
1g–5g	3	1, 2, 5 g	8 g	10.XSHP-530	10.XSHM-530	10.XSHS-530	10.XSHR-530	...536
10g–50g	3	10, 20, 50 g	80 g	10.XSHP-650	10.XSHM-650	10.XSHS-650	10.XSHR-650	...656
100g–500g	3	100,200,500g	800 g	10.XSHP-660	10.XSHM-660	10.XSHS-660	10.XSHR-660	...666
100g–1kg	4	100,200,500...	1.800 g	10.XSHP-670	10.XSHM-670	10.XSHS-670	10.XSHR-670	...676
1g–1kg	10	1, 2, 5, ...	1.888 g	10.XSHP-610	10.XSHM-610	10.XSHS-610	10.XSHR-610	...616
1kg–5kg	3	1, 2, 5 kg	8.000 g	10.XSHP-680	10.XSHM-680	10.XSHS-680	10.XSHR-680	...686
2kg–10kg	3	2, 5, 10, kg	17.000 g	10.XSHP-690	10.XSHM-690	10.XSHS-690	10.XSHR-690	...696
1g–10kg	13	1, 2, 5, ...	18.888 g	10.XSHP-640	10.XSHM-640	10.XSHS-640	10.XSHR-640	...646

* Messunsicherheit U = 1/5 E1

** ab 100g im Kunststoff-Koffer mit Hartschaumeinlage