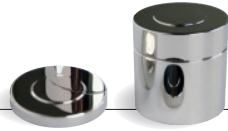







## Disc weights

**SPECIAL STAINLESS STEEL HE210**





highly polished

## SINGLE WEIGHT

Nominal value	Tol.	without box	 Plastic boxes with screwed top	 Clean room plastic cases **	 Mahogany wooden box	 Clean room case removeable inserts	PTB Calibration certificate U=1/5 E1 *
+/- mg	Art.no.	Art.no.	Art.no.	Art.no.	Art.no.	Art.no.	10.0000- Art.no.
1 g	0,005	10.SBHO-110	10.SBHD-110	10.SBHP-110	10.SBHM-110		...116
2 g	0,006	10.SBHO-120	10.SBHD-120	10.SBHP-120	10.SBHM-120		...126
5 g	0,008	10.SBHO-130	10.SBHD-130	10.SBHP-130	10.SBHM-130		...136
10 g	0,010	10.SBHO-140	10.SBHD-140	10.SBHP-140	10.SBHM-140		...146
20 g	0,012	10.SBHO-150	10.SBHD-150	10.SBHP-150	10.SBHM-150		...156
50 g	0,015	10.SBHO-160	10.SBHD-160	10.SBHP-160	10.SBHM-160		...166
100 g	0,025	10.SBHO-170	10.SBHD-170	10.SBHP-170	10.SBHM-170	10.SBHR-170	...176
200 g	0,050	10.SBHO-180	10.SBHD-180	10.SBHP-180	10.SBHM-180	10.SBHR-180	...186
500 g	0,125	10.SBHO-190	10.SBHD-190	10.SBHP-190	10.SBHM-190	10.SBHR-190	...196
1 kg	0,25	10.SBHO-210	10.SBHD-210	10.SBHP-210	10.SBHM-210	10.SBHR-210	...216
2 kg	0,5	10.SBHO-220	10.SBHD-220	10.SBHP-220	10.SBHM-220	10.SBHR-220	...226
5 kg	1,2	10.SBHO-230	10.SBHD-230	10.SBHP-230	10.SBHM-230	10.SBHR-230	...236
10 kg	2,5	10.SBHO-240	10.SBHD-240	10.SBHP-240	10.SBHM-240	10.SBHR-240	...246
20 kg	5	10.SBHO-250			10.SBHM-250	10.SBHR-250	...256
50 kg	12	10.SBHO-260			10.SBHM-260	10.SBHR-260	...266

Nominal value	Tol.			 Service case	PTB Calibration certificate U=1/5 E1 *
+/- mg	Art.no.	e	Art.no.	Art.no.	10.0000- Art.no.
5 kg	1,2			10.SBHS-230	...236
10 kg	2,5			10.SBHS-240	...246
20 kg	5			10.SBHS-250	...256
50 kg	12			10.SBHS-260	...266

## SETS

Nominal value	Qty.	Splitting up	Content	 Clean room plastic box	 Mahogany wooden box	 Service case	 Clean room case removeable inserts	PTB Calibration certificate U=1/5 E1 *
				Art.no.	Art.no.	Art.no.	Art.no.	10.0000- Art.no.
1g–5g	3	1, 2, 5 g	8 g	10.XSHP-530	10.XSHM-530	10.XSHS-530	10.XSHR-530	...536
10g–50g	3	10, 20, 50 g	80 g	10.XSHP-650	10.XSHM-650	10.XSHS-650	10.XSHR-650	...656
100g–500g	3	100,200,500g	800 g	10.XSHP-660	10.XSHM-660	10.XSHS-660	10.XSHR-660	...666
100g–1kg	4	100,200,500...	1.800 g	10.XSHP-670	10.XSHM-670	10.XSHS-670	10.XSHR-670	...676
1g–1kg	10	1, 2, 5, ...	1.888 g	10.XSHP-610	10.XSHM-610	10.XSHS-610	10.XSHR-610	...616
1kg–5kg	3	1, 2, 5 kg	8.000 g	10.XSHP-680	10.XSHM-680	10.XSHS-680	10.XSHR-680	...686
2kg–10kg	3	2, 5, 10, kg	17.000 g	10.XSHP-690	10.XSHM-690	10.XSHS-690	10.XSHR-690	...696
1g–10kg	13	1, 2, 5, ...	18.888 g	10.XSHP-640	10.XSHM-640	10.XSHS-640	10.XSHR-640	...646

\* U = 1/5 E1 uncertainty of measurement

\*\* up from 100 g in a plastic case with foam insert